

spring/summer 2014 clothing

Natural

Style



ec
earth creations
eco · pure · simple

Made
in the
U.S.A.

The movement is well underway to bring production back to the United States. At earth creations, we have always believed in Made in the U.S.A. and sustainable fashion for a brighter future. Thank you for helping us change the fashion industry one garment at a time.

Cheers,

Joy & Martin

Joy and Martin Ledvina
(founders and owners of earth creations®)

Made in the
 **USA**



1001 Lucca Shrug

This adorable shrug top has an attractive continuous 4" ruffle around all the front and back edges. The 3/4 length sleeves have decorative lettuce edging. Cute paired with all our bottoms and tanks.

Fabric: 55% hemp / 45% organic cotton jersey

Colors Available: Black, Coral, Malachite, Mud, Natural, Sea, Stone, Violet

Sizes: s,m,l,xl,xxl



available blank and printed



1170-256-SEA
Circle

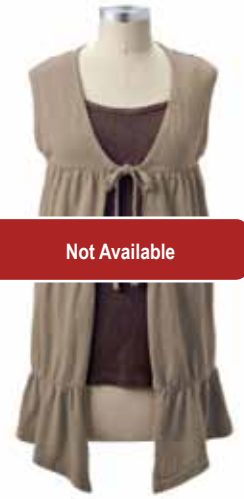
1170 Better Than Before Tank Top

Our tank is a must-have basic that can stand alone or be worn under any of our jackets or pullovers. It is self-trimmed, including the straps. The same body fit as our previous tank, but about 3" longer.

Fabric: 55% hemp / 45% organic cotton jersey

Colors Available: Black, Canary, Coral, Malachite, Mud, Natural, Sea, Stone, Violet

Sizes: s,m,l,xl,xxl



Not Available

1106 Venetian Vest

This peasant inspired vest has self binding ties with four Shirred panels that add dimension and hide everything. Cute loose or belted too!

Fabric: 55% hemp / 45% organic cotton jersey

Colors Available: Black, Coral, Malachite, Mud, Natural, Sea, Stone, Violet

Sizes: s,m,l,xl



2033 Arabesque Skirt/Dress

This flattering skirt is the perfect piece to wear to work, play or a night out. With a wide 8" waistband that can be worn up or rolled over. It features a reversed ruffle seam 6" from the bottom and lettuce edging. On top of it all, it pairs beautifully with almost any of our wonderful tops.

Fabric: 55% hemp / 45% organic cotton jersey

Colors Available: Black, Coral, Malachite, Mud, Natural, Sea, Stone, Violet

Sizes: s,m,l,xl,xxl



1170-256-SEA
Circle



1170-286-BLK
Earth Heart



1170-359-VIOL
Stitched Flower



1170-843-CORAL
Three Wishes
(right side print)



2526 Contour Pant

This full length pant fits amazingly. The texture of the fabric hides all the lumps. Wear them to work out or run about town.

Fabric: 53% hemp / 44% organic cotton jersey / 3% lycra

Colors Available: Black, Malachite, Mud, Natural, Stone, Violet

Sizes: s,m,l,xl,xxl





1102 Marina Tunic (elbow sleeve)

This unique hooded tunic has flattering reversed diagonal seaming across the bodice, a shirred neck, side vents and lettuce edging all around.

Wonderful when paired with leggings or jeans.

Fabric: 55% hemp / 45% organic cotton jersey
Colors Available: Black, Coral, Malachite, Natural, Sea, Stone, Violet

Sizes: s,m,l,xl,xxl



fitted



1105 Sadie Top (sleeveless)

A new twist on our ever popular hooded tunic. This sleeveless top has a decorative three button faux placket with lettuce edging, and reverse seamed panel at the hips. With lettuce edges at all hems, and two front pockets, this piece is durable, yet feminine at the same time. It looks great as a tunic over any of our leggings.

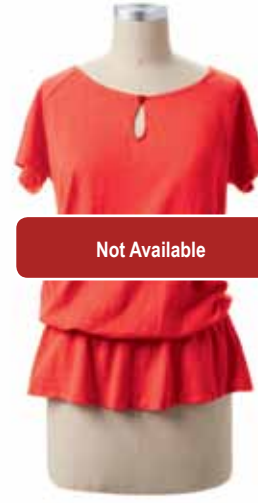
Fabric: 55% hemp / 45% organic cotton jersey

Colors Available: Black, Coral, Malachite, Natural, Sea, Stone, Violet

Sizes: s,m,l,xl



fitted



Not Available

1104 Dash Top

This raglan sleeve top with thin elasticized peplum works well worn bunched at the waist or down with a belt. Faux keyhole closure neckline.

Fabric: 55% hemp / 45% organic cotton jersey

Colors Available: Black, Coral, Malachite, Mud, Natural, Sea, Stone, Violet

Sizes: s,m,l,xl,xxl



semi fitted



Nancy pictured in 1102 Marina Tunic Top Elbow Sleeve (Violet) and 2451 Lucinda Legging (Canary)



2015 Ruffle Capri Legging

These outstanding capri leggings are just the right length to accent any spring/summer dress or tunic. The three adorable lettuce edge hem ruffle accents at the bottom of each leg add a touch of fun to any outfit.

Fabric: 53% hemp / 44% organic cotton jersey / 3% lycra

Colors Available: Black, Canary, Coral, Mud, Natural, Sea, Stone, Violet

Sizes: s,m,l,xl,xxl



fitted



1038 Sadie Top (elbow length sleeve)

Our ever popular, hooded tunic has a decorative three button faux placket with lettuce edging, elbow length sleeves and reverse seamed panel at the hips.

With lettuce edges at all hems, and two front pockets, this piece is durable, yet feminine at the same time. It looks great as a tunic over any of our leggings.

Fabric: 55% hemp / 45% organic cotton jersey

Colors Available: Black, Coral, Malachite, Natural, Sea, Stone, Violet

Sizes: s,m,l,xl,xxl



fitted



2151 Patch Pocket Pant

This crop length pant fashions two large patch pockets trimmed with coconut buttons. It is a fun and yet so comfortable option!

Fabric: 55% hemp / 45% organic cotton jersey

Colors Available: Black, Malachite, Mud, Natural, Stone

Sizes: s,m,l,xl,xxl



relaxed

SS 2014 COLORS

BLACK (low impact dye)

CANARY (low impact dye)

CORAL (low impact dye)

MALACHITE (clay dye)

MUD (clay dye)

NATURAL (no dye)

SEA (low impact dye)

STONE (clay dye)

VIOLET (low impact dye)

WHITE (no dye)



available blank and printed

1052-297-MUD
Four Seasons

1052 Better Than Before Scoop

Our cute and durable self-trimmed hemp top with a scoop neckline. This must-have piece is longer and more fitted than our Original Scoop.

Fabric: 55% hemp / 45% organic cotton jersey
Colors Available: Black, Canary, Coral, Malachite, Mud, Natural, Sea, Stone, Violet

Sizes: s,m,l,xl,xxl



1051 Original Scoop Neck

Available in Coral, Malachite, Sea, and Violet.
Please see order form.



3006 Cairo Dress

A charming sleeveless dress with a fitted bodice, 2" self trim bands around the neckline and arm holes, faux sash empire waist and reversed seaming throughout. This knee length dress has a slightly flared raw hemmed edge with very classic lines.

Fabric: 55% hemp / 45% organic cotton jersey
Colors Available: Black, Coral, Malachite, Natural, Sea, Stone, Violet

Sizes: s,m,l,xl



1541 Salsa Shrug

Features a v-neck and cross over front with a lower hemline in the back. Great layered with a tank.

Fabric: 100% organic cotton jersey
Colors Available: Black, Canary, Coral, Malachite, Sea, Stone, Violet, White

Sizes: s,m,l,xl

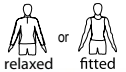


1558 Tibetan Tie Top

This tie-front cardigan is made of organic cotton and has a deep v-neckline, front tie closure and straight sleeves. All hems have a merrowed finish for a fun accent. Looks gorgeous paired back with the Sasha Skirt or the Split Skirt.

Fabric: 100% organic cotton jersey
Colors Available: Black, Canary, Coral, Malachite, Mud, Sea, Stone, Violet, White

Sizes: s,m,l,xl,xxl



1052-037-VIOL
Bamboo
(off center print)



1052-115-SEA
Vivid Butterfly



1052-132-SEA
New Tree Pose



1052-134-MAL
Life is Beautiful
(off center print)



1052-187-BLK
Luna



1052-231-CAN
Moroccan Lotus



1052-248-CORAL
Sunflower Mandala



1052-297-MUD
Four Seasons



1052-815-NAT
Art Deco Moon



3056 Auriel Jumper

A perfect transitional piece! In the warmer months it can be worn sleeveless or with short sleeves. As the days get cooler, pair it with long sleeves and leggings. The jumper is accented with angel sleeves and buttons at the high empire waist.

Fabric: 55% hemp / 45% organic cotton jersey
Colors Available: Black, Coral, Malachite, Natural, Sea, Stone, Violet

Sizes: s,m,l,xl



2552 Sasha Skirt

Our best selling triple layered skirt. Its knee-skimming length flatters any body type.

Fabric: 100% organic cotton jersey
Colors Available: Black, Canary, Coral, Malachite, Mud, Sea, Stone, Violet, White

Sizes: s,m,l,xl,xxl



Not Available

back

2520 Split Skirt

This knee length high low skirt over wide legged pants is fun and flirtatious. The merrowed edges turn this trend into a great wardrobe piece.

Fabric: 100% organic cotton jersey
Colors Available: Black, Mud, Stone, White

Sizes: s,m,l,xl,xxl



made in the usa



much lighter than last year!



available blank and printed



1539 Willow Jacket
If you like ruffles and comfort this jacket is for you. A double row of ruffles around the facing and bottom of the 3/4 length sleeves, with bag pockets make this a winning combination.
Fabric: 100% organic cotton jersey
Colors Available: Black, Canary, Coral, Malachite, Sea, Stone, Violet, White
Sizes: s,m,l,xl,xxl



3531 Milan Dress
This knee-length dress has a scooped-neckline, fitted bodice, and four flounced layers of different complimentary fabrics on the bottom, including printed linen. A unique and flattering summer dress.
Fabric: Body 100% organic cotton jersey and 100% organic cotton slub with 100% linen printed trim
Colors Available: Canary, Coral, Sea, Stone, Violet, White
Sizes: s,m,l,xl



1531 s/s V-Neck Top
The s/s version of our favorite long sleeve v-neck. The semi fitted tapered line is flattering to any figure. The v-neckline is a marvelous frame for a fun, funky necklace! A classic look by itself, or fabulous under a light spring jacket.
Fabric: 100% organic cotton jersey
Colors Available: Black, Canary, Coral, Malachite, Mud, Sea, Stone, Violet, White
Sizes: s,m,l,xl,xxl



646 Skinny Tee
This is our flattering ladies tee with short sleeves and self trimmed scoop neck. Made of organic cotton jersey, this is a great fitting tee with a very soft feel.
Fabric: 100% organic cotton jersey
Colors Available: Black, Canary, Coral, Malachite, Mud, Sea, Stone, Violet, White
Sizes: s,m,l,xl,xxl



2511 Simone Pant
Our fantastic crop pants have a 2" waistband and reversed serge seam that leads into a multi layered "tulip" panel with raw edges at the bottom hem of each leg.
Fabric: 100% organic cotton jersey
Colors Available: Black, Malachite, Mud, Stone, Violet
Sizes: s,m,l,xl,xxl

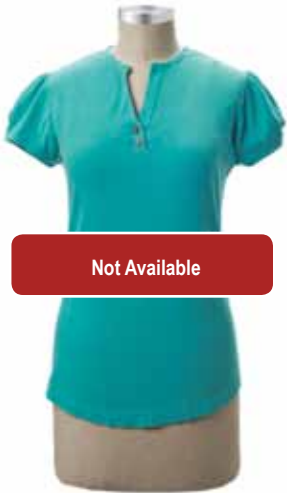


3532 Muse Maxi Dress
This full length sleeveless Maxi dress flaunts a gathered neckline and flattering inset panel at waist.
Fabric: 100% organic cotton jersey
Colors Available: Black, Coral, Malachite, Sea, Stone, Violet, White
Sizes: s,m,l,xl



2402 Snazzy Pant
This funky Capri length pant is topped by an appealing asymmetrical skirt with diagonal reversed seaming accents and a raw hemmed edge. Very cute on!
Fabric: 100% organic cotton jersey skirt and 90% organic cotton / 10% lycra jersey band and pants
Colors Available: Black, Malachite, Mud, Stone, White
Sizes: s,m,l,xl





Not Available

1540 Bandit Top

This keyhole cap sleeved top has a banded V-neck collar with a faux button closure.

Fabric: 100% organic cotton jersey

Colors Available: Black, Canary, Coral, Malachite, Mud, Sea, Stone, Violet, White

Sizes: s,m,l,xl,xxl



1418 Summer Top

Features a slightly dipped hem line on both sides that hides everything. The wide self trimmed v-neck is very complimentary. This top is great for working out or relaxing during those warm summer days.

Fabric: 90% organic cotton / 10% lycra jersey

Colors Available: Black, Canary, Coral, Malachite, Mud, Sea, Stone, Violet, White

Sizes: s,m,l,xl



1538 Freedom Top

This one size fits most vest topper has a single coconut button closure. Lots of drape offers a luminous appeal when left open or closed.

Fabric: 100% organic cotton jersey

Colors Available: Black, Canary, Coral, Malachite, Mud, Sea, Stone, Violet, White

Sizes: one size fits most



1543 s/s Handkerchief Tunic Top

This styled handkerchief top is made of our super soft organic cotton jersey with a flattering scoop neckline, short sleeves, and a high-low raw hemline. The side godet pockets add a fun and functional accent to this wonderful top. Perfect with our leggings!

Fabric: 100% organic cotton jersey

Colors Available: Black, Canary, Coral, Malachite, Sea, Stone, Violet, White

Sizes: s,m,l,xl,xxl



2406 Set Sail Legging (knicker length)

This adorable knicker length legging has a keyhole accent at the hem on each side.

Fabric: 90% organic cotton / 10% lycra jersey

Colors Available: Black, Canary, Coral, Mud, Sea, Stone, Violet, White

Sizes: s,m,l,xl



3530 Kanga Tunic/Dress

This complimentary dress has a huge kangaroo pocket in the front of the dress. Nice flounce detail at the sleeve. Above the knee length.

Fabric: 100% organic cotton jersey

Colors Available: Black, Canary, Coral, Malachite, Sea, Stone, Violet, White

Sizes: s,m,l,xl,xxl



2451 Lucinda Legging

This versatile legging features 2.5" self-fabric waistband that provides a bit of comfy stretch. Three carved tagua nut buttons at the bottom side-seam of each leg add a fun little detail. Work well with boots too.

Fabric: 90% organic cotton / 10% lycra jersey

Colors Available: Black, Canary, Coral, Mud, Sea, Stone, Violet, White

Sizes: s,m,l,xl



3540 Reef Dress

A wonderful spring layering piece and adorable stand alone dress for hot weather. Also great with a belt and leggings.

Fabric: 100% organic cotton slub

Colors Available: Canary, Coral, Sea, Stone, Violet, White

Sizes: s,m,l,xl,xxl





1544 Alise Tunic with Polka Dot

The patch slub tunic has printed tab cuffs and front right bag pocket. Sleeves can be worn rolled up or left down.

Fabric: 100% organic cotton slub with 100% linen trim

Colors Available: Canary, Coral, Sea, Stone, White

Sizes: s,m,l,xl,xxl



available both with and w/o Polka Dot



1546 Bon Voyage Top with Polka Dot

1534 Bon Voyage Top without Polka Dot

This V-neck is available with slub or printed linen cuffed collar with three quarter sleeves and lower hem line in the back. Great basic top that pairs well with everything.

Fabric: 100% organic cotton slub with 100% linen trim or slub on cuff

1546 Colors Available: Canary, Coral, Sea, Stone, White

1534 Colors Available: Canary, Coral, Mud, Sea, Stone, Violet, White

Sizes: s,m,l,xl,xxl



1542 Reunion Top

V-neck tank top with side vents and linen accent panel on the bottom.

Fabric: 100% organic cotton slub with 100% linen trim

Colors Available: Canary, Coral, Sea, Stone, White

Sizes: s,m,l,xl



1529 s/s Slub Tee

This is our much loved short sleeve Skinny Tee with a scoop neck and flattering fit made of organic cotton slub fabric for a fun twist. Our new slub fabric adds a touch of textured whimsy to this classic look.

Fabric: 100% organic cotton slub

Colors Available: Canary, Coral, Malachite, Mud, Sea, Stone, Violet, White

Sizes: s,m,l,xl,xxl



available both with and w/o Polka Dot



2532 Beach Pant with Polka Dot

2524 Beach Pant without Polka Dot

This cute cropped pant with turn up cuff tab (available with polka dots or with out) works well with so many of our tops.

Fabric: 100% organic cotton slub with organic cotton / lycra band and 100% linen trim or slub on cuff

2532 Colors Available: Canary, Coral, Sea, Stone, White

2524 Colors Available: Canary, Coral, Mud, Sea, Stone, Violet, White

Sizes: s,m,l,xl,xxl



2523 Breeze Skirt

This simple A-line skirt with lycra band is sure to be your summer go to skirt. Pull it on with our slub top and you are ready for any occasion.

Fabric: 100% organic cotton slub with organic cotton / lycra band

Colors Available: Canary, Coral, Mud, Sea, Stone, Violet, White

Sizes: s,m,l,xl,xxl



3535 Reunion Skirt

This knee length A-line skirt has simple elastic waist band, and polka dot pattern panel for accent. Nice paired with the Reunion Top.

Fabric: 100% organic cotton slub with 100% linen trim

Colors Available: Canary, Coral, Sea, Stone, White

Sizes: s,m,l,xl



2500 Fun Skort

This great fitting skort allows you to look fantastic while having fun during your active day. Our new organic cotton slub fabric adds a touch of textured whimsy.

Fabric: 100% organic cotton slub

Colors Available: Canary, Coral, Mud, Sea, Stone, Violet, White

Sizes: s,m,l,xl





ec
earth creations
eco · pure · simple

1-800-792-9868
205-426-2302 Fax 205-426-2311
www.earthcreations.net
earthcreations@earthcreations.net
made in the usa

This catalogue is printed on PEFC certified paper obtained from sustainably harvested forests.

earth creations
3056 mountainview way
bessemer, al 35020
usa