

s p r i n g / s u m m e r 2 0 1 3 c l o t h i n g



ec  
earth creations  
eco · pure · simple

# Back to the Basics

Urban or Rural? You can have it all. More and more people are combining these two lifestyles with ease and fun. With earth creations' spring/summer line you will be inspired by this back to the basics trend like we were. Have fun!

Cheers,

*Joy & Martin*

Joy and Martin Ledvina  
 (founders and owners of earth creations®)

*P.S. Oh and don't forget, at earth creations our clothing is made in rural America, right here in the U.S.A.*



**1001 Lucca Shrug**

This top has an attractive continuous ruffle around the neck and front and back hem edges. Cute paired with all our bottoms.

**Fabric:** 55 % hemp / 45% organic cotton jersey

**Colors Available:** Aqua Blue, Black, Celery, Malachite, Natural, Orchid, Topaz, Violet

**Sizes:** s,m,l,xl



**1051 Original Scoop**

This scoop-neck tee has a boxy fit and a cropped length. You asked for us to bring it back and we did!

**Fabric:** 55 % hemp / 45% organic cotton jersey

**Colors Available:** Aqua Blue, Malachite, Orchid, Violet

**Sizes:** s,m,l,xl



**1038 Sadie Top (elbow length sleeve)**

This popular hooded top can be worn as a tunic with leggings or skinny jeans or as a dress with tights. It has a decorative faux button placket, decorative seaming, and pockets.

**Fabric:** 55 % hemp / 45% organic cotton jersey

**Colors Available:** Aqua Blue, Black, Celery, Malachite, Natural, Orchid, Topaz, Violet

**Sizes:** s,m,l,xl



**3004 Sydney Dress**

This knee-length dress has a scooped-neckline with 4 flounced layers of different fabrics on the bottom, including printed linen. A unique and flattering summer dress.

**Fabric:** Body 55 % hemp / 45% organic cotton jersey bodice and 100% linen in skirt

**Colors Available:** Aqua Blue, Celery, Malachite, Natural, Orchid, Topaz, Violet

**Sizes:** s,m,l,xl



**2033 Arabesque Skirt**

This great flared skirt has a lycra waistband and a decorative ruffled hem with lettuce edge finish.

**Fabric:** 55 % hemp / 45% organic cotton jersey

**Colors Available:** Aqua Blue, Black, Celery, Malachite, Natural, Orchid, Topaz, Violet

**Sizes:** s,m,l,xl



**3005 Tunisian Tank Dress**

This fun dress has a thin elastic band at the waist that can be worn gathered up or straight.

**Fabric:** 55 % hemp / 45% organic cotton jersey

**Colors Available:** Aqua Blue, Black, Celery, Malachite, Natural, Orchid, Topaz, Violet

**Sizes:** s,m,l,xl





**1072 Voyage V-neck**

This gotta have top has a non-functional button down v-neck collar in the front and three quarter length sleeves

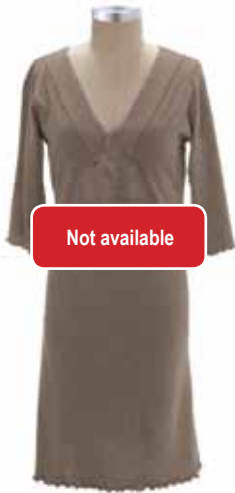
**Fabric:** 55 % hemp / 45% organic cotton jersey

**Colors:** Aqua Blue, Black, Celery, Malachite, Natural, Orchid, Topaz, Violet

**Sizes:** s, m, l, xl



semi fitted



Not available

**3007 Titan Dress**

Our crowd pleasing dress with lettuce edging, great paired with a tank underneath or not.

**Fabric:** 55 % hemp / 45% organic cotton jersey

**Colors Available:** Aqua Blue, Black, Malachite, Orchid, Topaz, Violet

**Sizes:** s,m,l,xl



semi fitted

available blank and printed



**1053-843-TUR**  
Three Wishes  
(off center print)



**1053-137-BLK**  
Lotus Pose



**1053-843-TUR**  
Three Wishes  
(off center print)



**1053-049-AQBLU**  
Three Dragonflies



**1053-834-ORCHID**  
Scattered Sunflowers  
(left side print)

**1053 Tank Top**

Our strappy tank is a must-have basic that looks great on its own or worn under our cardigans, wraps, and pullovers.

**Fabric:** 55 % hemp / 45% organic cotton jersey

**Colors Available:** Aqua Blue, Black, Orchid, Sunstone, Turquoise, Violet

**Sizes:** s,m,l,xl



fitted



**2009 Creative Crop Pant**

This is our same great fitting crop pant, now offered in hemp jersey. Lycra waistband and side pocket make this an essential to your wardrobe.

**Fabric:** 55 % hemp / 45% organic cotton jersey

**Colors Available:** Black, Mud, Natural, Topaz

**Sizes:** s,m,l,xl



semi fitted



**3006 Cairo Dress**

A very complimentary dress with seaming to the outside with a slightly flared knee length hem.

**Fabric:** 55 % hemp / 45% organic cotton jersey

**Colors Available:** Aqua Blue, Black, Celery, Malachite, Natural, Orchid, Topaz, Violet

**Sizes:** s,m,l,xl

**Fit type:** semi-fitted at top and relaxed on bottom



**2015 Ruffle Capri Legging**

This ruffle finished Capri legging pairs nicely with all of the ec tunics and dresses.

**Fabric:** 53% hemp/44% organic cotton jersey/3% lycra

**Colors Available:** Aqua Blue, Black, Malachite, Natural, Orchid, Topaz, Violet

**Sizes:** s,m,l,xl



fitted



Gabby pictured in 3005 Tunisian Tank Dress (Orchid)



Gabby pictured in 1052 Better than Before Scoop Neck (Malachite) and 2033 Arabasque Skirt (Malachite)



available blank and printed



1052-815-NAT  
Art Deco Moon

**1052 Better Than Before Scoop**  
This scoop-neck tee has a flattering fit and a great length.  
**Fabric:** 55 % hemp / 45% organic cotton jersey  
**Colors Available:** Aqua Blue, Black, Celery, Malachite, Mud, Natural, Orchid, Sunstone, Topaz, Turquoise, Violet  
**Sizes:** s,m,l,xl



**1014 Penelope Top**  
This top has elasticized shoulders and an angular front yoke.  
**Fabric:** 55 % hemp / 45% organic cotton jersey  
**Colors Available:** Aqua Blue, Black, Celery, Malachite, Natural, Orchid, Topaz, Violet  
**Sizes:** s,m,l,xl



**1529 s/s Slub Tee**  
The slub fabric version of our Skinny Tee.  
**Fabric:** 100% organic cotton slub  
**Colors Available:** Aqua Blue, Celery, Malachite, Orchid, Topaz, Violet, White  
**Sizes:** s,m,l,xl



1052-037-ORCHID  
Bamboo



1052-056-BLK  
Lotus Flower  
*(off center print)*



1052-115-AQBLU  
Vivid Butterfly



1052-132-TUR  
NEW Tree Pose



1052-134-MAL  
Life is Beautiful



1052-135-VIOL  
Flowering  
*(right side print)*



1052-208-MAL  
Dragonflies



1052-810-BLK  
Peaceful Tree



1052-815-NAT  
Art Deco Moon



**2090 Dharma Pant – the original fabric**  
This wide-legged yoga pant has a wide waistband that can be worn up or rolled down. One of our most popular pants!  
**Fabric:** 53% hemp/44% organic cotton jersey/3% lycra  
**Colors Available:** Malachite, Mud, Natural, Topaz, Violet  
**Sizes:** s,m,l,xl



**2500 Fun Skort**  
This great fitting skort allows you to look great while having fun during your active day.  
**Fabric:** 100% organic cotton slub  
**Colors Available:** Aqua Blue, Celery, Malachite, Mud, Orchid, Topaz, Violet, White  
**Sizes:** s,m,l,xl





**1530 Favorite Poncho**

A perfect addition to your earth creations wardrobe. It is super comfy and cozy too. Great for layering.

**Fabric:** 100% organic cotton slub

**Colors Available:** Aqua Blue, Celery, Malachite, Orchid, Topaz, Violet, White

**Sizes:** s/m and l/xl



relaxed



Not available

**1417 Zip It Up Jacket**

This sporty hoody has side pockets with a zipper. Great for a workout cover up or to wear around town.

**Fabric:** 90% organic cotton / 10% lycra jersey

**Colors Available:** Aqua Blue, Black, Celery, Malachite, Orchid, Topaz, Violet, White

**Sizes:** s,m,l,xl



fitted



**3507 Waterfall Tunic**

V-neckline with high waist. Cascading front drape with lettuce edged finish. Delightful with leggings.

**Fabric:** 100% organic cotton jersey

**Colors:** Aqua Blue, Black, Malachite, Orchid, Topaz, Violet, White

**Sizes:** s,m,l,xl



relaxed



**2451 Lucinda Legging**

This is our versatile legging with faux side-seam buttons for that little added detail. They work well with boots too!

**Fabric:** 90% organic cotton / 10% lycra jersey

**Colors Available:** Aqua Blue, Black, Celery, Malachite, Orchid, Topaz, White

**Sizes:** s,m,l,xl



fitted



**2402 Snazzy Pant**

Lycra Capri pant topped by appealing skirt with outside seaming. Very cute!

**Fabric:** 100% organic cotton jersey skirt and 90% organic cotton / 10% lycra jersey band and pants

**Colors Available:** Aqua Blue, Black, Celery, Malachite, Orchid, Topaz, Violet, White

**Sizes:** s,m,l,xl



semi fitted



**3502 Michelle Dress**

V-neck with faux button closure. Knee length, comfy and cute.

**Fabric:** 100% organic cotton jersey

**Colors:** Aqua Blue, Black, Celery, Malachite, Orchid, Topaz, Violet

**Sizes:** s,m,l,xl



relaxed



Gabby pictured in 1053-843 Three Wishes Tank (Turquoise) and 2402 Snazzy Pant (Topaz)



MJ pictured in 3507 Waterfall Tunic (Violet)



**1518 Lauren Top**

Large bag pocket reaches from side seam to middle seam. Charming tunic length top, pair back with leggings.

**Fabric:** 100% organic cotton jersey

**Colors Available:** Aqua Blue, Black, Celery, Malachite, Orchid, Topaz, Violet, White

**Sizes:** s,m,l,xl



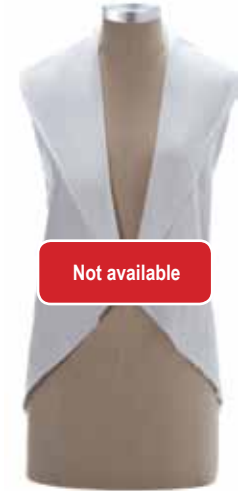
**1531 s/s V-Neck Top**

The short sleeve version of our long sleeve v-neck.

**Fabric:** 100% organic cotton jersey

**Colors Available:** Aqua Blue, Black, Celery, Malachite, Orchid, Topaz, Violet, White

**Sizes:** s,m,l,xl



Not available

**1520 Circle Topper**

Nice topper to use for layering.

**Fabric:** 100% organic cotton jersey

**Colors Available:** Aqua Blue, Black, Celery, Malachite, Orchid, Topaz, Violet, White

**Sizes:** s,m,l,xl



**3506 Bev's Wrap Dress**

V-neckline with wrap tie with button hole for tie. Above knee length with high/low hem line.

**Fabric:** 100% organic cotton jersey

**Colors:** Aqua Blue, Black, Celery, Malachite, Orchid, Topaz, Violet, White

**Sizes:** s,m,l,xl



**2511 Simone Pant**

Our new crop pant has a flat lycra waist band and layered tulip panel at the hem.

**Fabric:** 100% organic cotton

**Colors Available:** Black, Celery, Malachite, Mud, Topaz

**Sizes:** s,m,l,xl



**2552 Sasha Skirt**

Our best selling triple layered skirt. Its knee-skimming length flatters any body type.

**Fabric:** 100% organic cotton jersey

**Colors Available:** Aqua Blue, Black, Celery, Malachite, Mud, Orchid, Topaz, Violet, White

**Sizes:** s,m,l,xl





available blank,  
printed and tie dyed

646-9TD-ORCHID



3509 Athena Maxi Dress

A very complimentary dress with seaming to the outside.

**Fabric:** 100% organic cotton jersey

**Colors Available:** Aqua Blue, Black, Celery, Malachite, Orchid, Topaz, Violet

**Sizes:** s,m,l,xl

**Fit type:** fitted at top, semi-fitted on bottom

**1514 Espanola Top (sleeveless)**  
This comfy, wide-collared top has decorative lettuce edges and a front button closure. It's a great layering piece.

**Fabric:** 100% organic cotton jersey

**Colors Available:** Aqua Blue, Black, Celery, Malachite, Orchid, Topaz, Violet, White

**Sizes:** s,m,l,xl



relaxed

**646 Skinny Tee**

This is our flattering, great-fitting tee with short sleeves.

**Fabric:** 100% organic cotton jersey

**Colors Available:** Aqua Blue, Black, Celery, Malachite, Orchid, Sunstone, Topaz, Violet, White

**Sizes:** s,m,l,xl



fitted



646-050-BLK

Motif

(front and shoulder print)



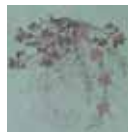
646-114-VIOL

Batiked Dragonfly



646-149-MAL

Cherry Time (collar print)



646-518-WHT

Turkish Dreams



646-833-CLR

Tree Pose 2



646-852-AQBLU

Retro Flowers



646-853-TOP

Maori Design



646-858-ORCHID

Single Owl



**1519 Racer Tank Top**

This tunic length tank features front neck shirring and a racer back. Great for layering or wearing alone over leggings.

**Fabric:** 100% organic cotton jersey

**Colors Available:** Aqua Blue, Black, Celery, Malachite, Orchid, Topaz, Violet, White

**Sizes:** s,m,l,xl



semi fitted



**3200 Mod Hoody Tunic/Dress**

This adorable cowl neck dress has multiple uses. It can be draped over the shoulders, worn as a cowl neck, or as a hooded tunic/dress.

**Fabric:** 66% rayon made from bamboo / 28% organic cotton / 6% spandex French terry

**Colors Available:** Aqua Blue, Black, Malachite, Mud, Orchid, Topaz, Violet

**Sizes:** s,m,l,xl



semi fitted

ec  
earth creations  
eco · pure · simple

SS 2013 COLORS

AQUA BLUE (low impact dye)

BLACK (low impact dye)

CELERY (clay dye)

MALACHITE (clay dye)

MUD (clay dye)

NATURAL (no dye)

ORCHID (low impact dye)

SUNSTONE (clay dye)

TOPAZ (clay dye)

TURQUOISE (low impact dye)

VIOLET (low impact dye)

WHITE (no dye)

earth creations  
3056 mountainview way  
bessemer, al 35020  
usa

ec  
earth creations  
eco · pure · simple



1-800-792-9868  
205-426-2302 Fax 205-426-2311  
www.earthcreations.net  
earthcreations@earthcreations.net  
made in the usa

This catalogue is printed on PEFC certified paper obtained from sustainably harvested forests.